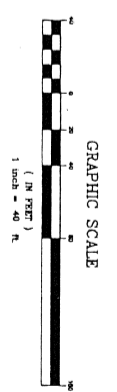
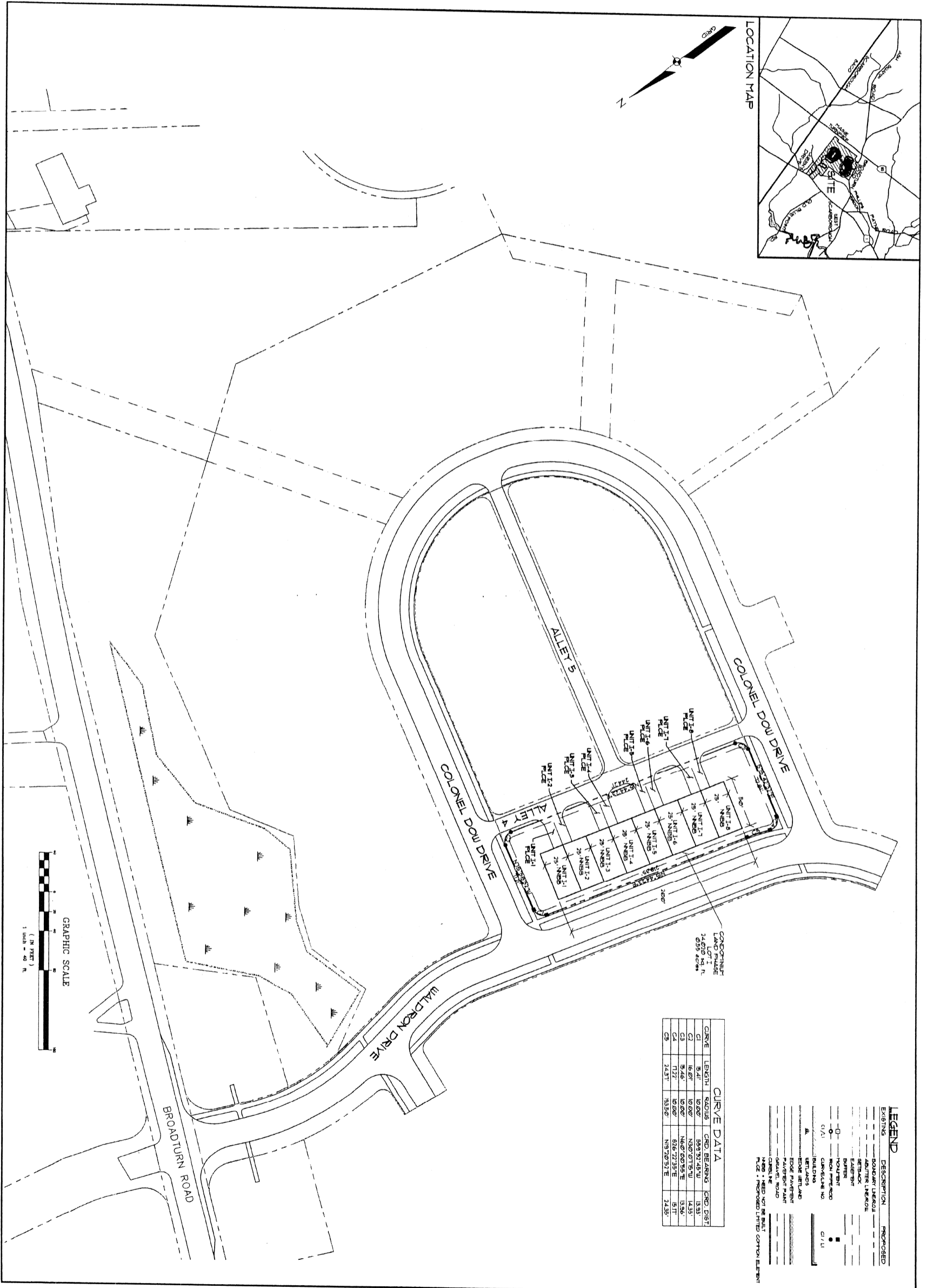




CONDOMINIUM PUBLIC OFFERING STATEMENT — PHASE 1
Exhibit 6



CURVE DATA

CURVE	LENGTH	SCALES	CORD BEARING	CORD DIST
C1	84.1'	90.00°	S89.7514S.W.	13.93'
C2	16.6'	90.00°	N50.0715W.	14.53'
C3	8.46'	90.00°	N67.2055E	13.56'
C4	17.7'	90.00°	S16.7235E	15.11'
C5	24.31'	93.50°	N19.7051E	24.35'

LEGEND

EXISTING	DESCRIPTION	PROPOSED
---	BOUNDARY LINE/ROA	---
---	ADJACENT LOT/ROA	---
---	EXISTING	---
---	UNIT	---
---	NON-UNIT	---
---	CONVERTIBLE NO.	---
---	SETBACKS	---
---	EDGE PAVEMENT	---
---	PAVEMENT PLAN	---
---	CONCRETE	---
---	NOTE: NEED NOT BE BUILT	---
---	NOTE: PROPOSED LIMITED COMMON ELEMENT	---

DUNSTAN CROSSING CONDOMINIUM PLAT OF:
DUNSTAN CROSSING LAND PHASE I
 BROADTURN ROAD
 SCARBOROUGH, MAINE
 FOR RECORD OWNERS:
RAYNAN PROPERTIES LLC & DUNSTAN PROPERTIES LLC
 1022 PORTLAND ROAD
 SACO, MAINE 04072

DATE: 2-12-07
 SCALE: 1"=40'
 SHEET 2 OF 2

Sebago Technics
 Engineering Expertise You Can Build On
 One Chasot Street
 Westbrook, Me 04098-1339
 Tel (207) 856-0277

PROJECT NO.	FIELD BOOK	DESIGN	CHKD	DRAWN
00414	742	SMF	SMF	PLS

REV: 1	BY: SMF	DATE: XXX	STATUS: XXX
--------	---------	-----------	-------------

THIS PLAN SHALL NOT BE MODIFIED WITHOUT WRITTEN PERMISSION FROM SEBAGO TECHNICS, INC. ANY ALTERATIONS, AUTHORIZED OR OTHERWISE, SHALL BE AT THE USER'S SOLE RISK AND WITHOUT LIABILITY TO SEBAGO TECHNICS, INC.

