

○ FRONT ELEVATION
 N.T.S. 2023.00 SQUARE FOOTAGE TWO CAR GARAGE

○ FRONT ELEVATION
 N.T.S. 1851.00 SQUARE FOOTAGE ONE CAR GARAGE

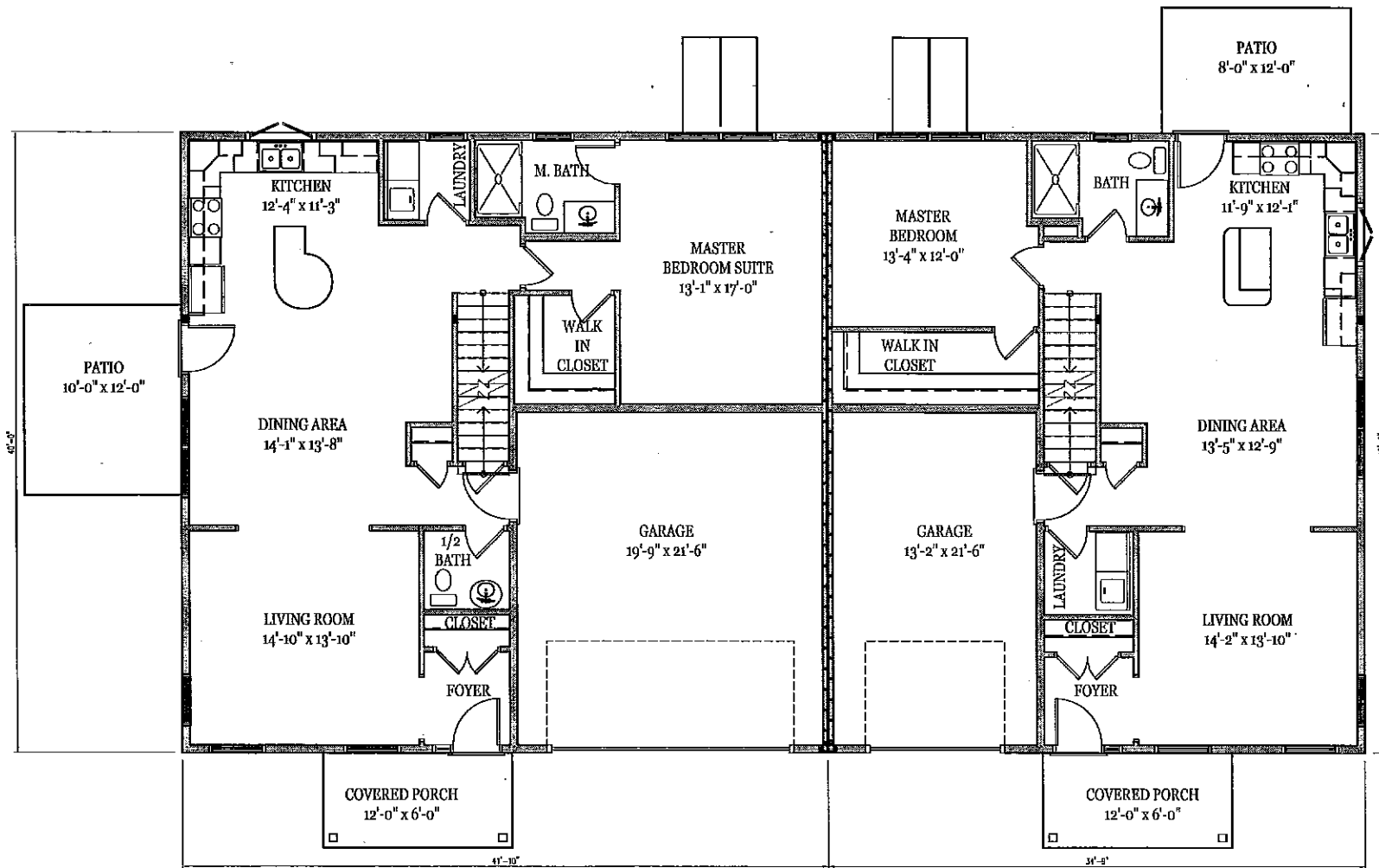
DATE	BY
12/16	RTS
12/11	
12/5	



THE STRATTON
 FRONT ELEVATION
 (TWO CAR GARAGE, ONE CAR GARAGE)



A1



○ FIRST FLOOR PLAN
 N.T.S. 1231.00 SQUARE FOOTAGE TWO CAR GARAGE

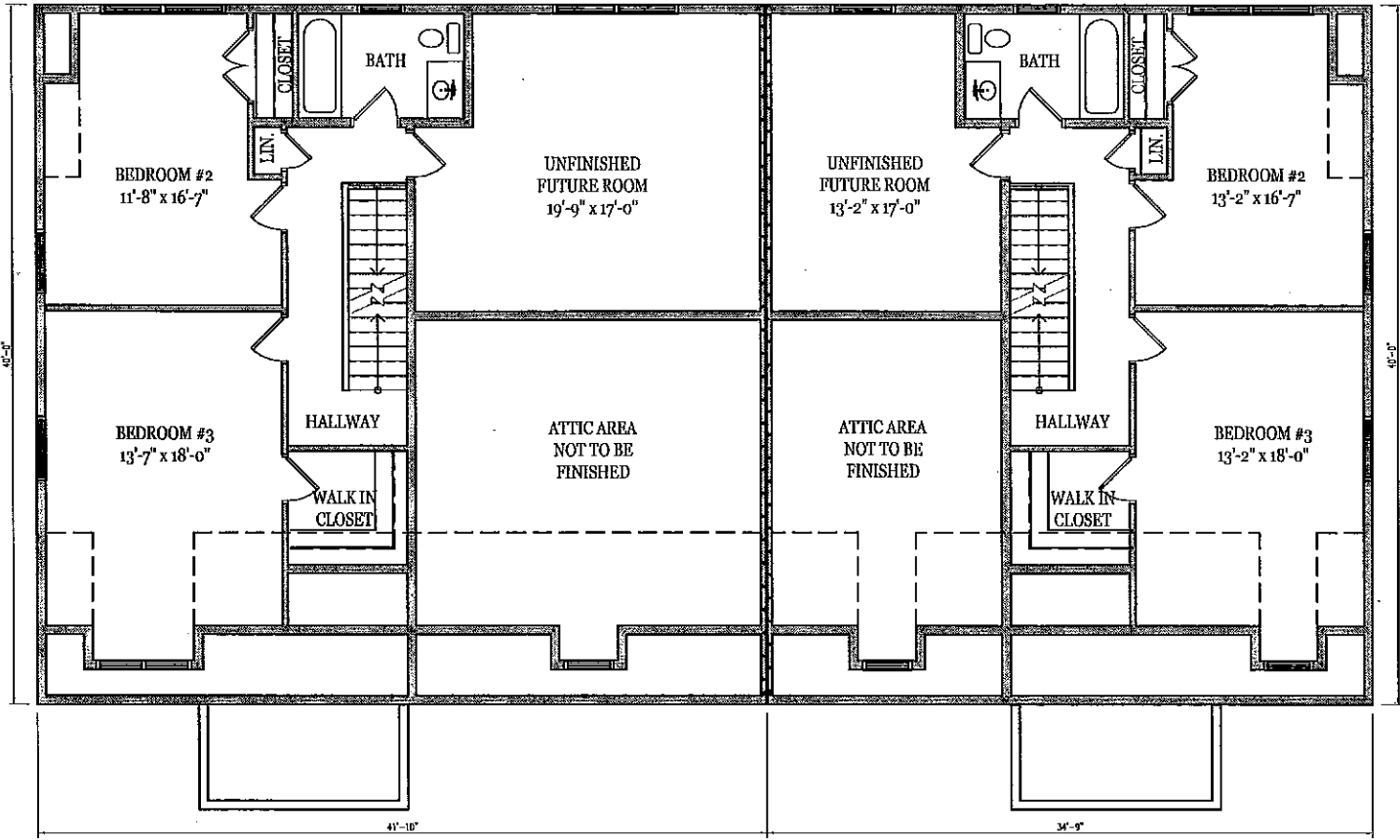
○ FIRST FLOOR PLAN
 N.T.S. 1093 SQUARE FOOTAGE ONE CAR GARAGE

PLAN	NO.	DATE
1	A2	



THE STRATTON
 FIRST FLOOR PLAN
 (TWO CAR GARAGE, ONE CAR GARAGE)





○ SECOND FLOOR PLAN
N.T.S. 793.00 SQUARE FOOTAGE TWO CAR GARAGE

○ SECOND FLOOR PLAN
N.T.S. 758.00 SQUARE FOOTAGE ONE CAR GARAGE

DATE	BY	REV
10/11/11	MS	1
10/11/11	MS	2
10/11/11	MS	3
10/11/11	MS	4
10/11/11	MS	5
10/11/11	MS	6
10/11/11	MS	7
10/11/11	MS	8
10/11/11	MS	9
10/11/11	MS	10



THE STRATTON
SECOND FLOOR PLAN
(TWO CAR GARAGE, ONE CAR GARAGE)



A3